

CVM NRG-96

Three-phase power analyzer

*Optimized features, minimum depth
and user friendly*



Measuring with accuracy class

 **CIRCUTOR**

Technology for energy efficiency

CVM NRG-96

CVM NRG-96 is a power panel meter that measures, calculates and displays main electric parameters for balanced or unbalanced three-phase networks.



Display

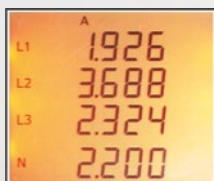
4 lines display



Energy line



Calculated neutral current



Power Factor



Four lines backlight LCD (one is used to display energy)



Minimum depth

CVM NRG-96 is a compact and small-sized instrument. Due to its minimum depth, it is an ideal complement for those electric panels where the “space” is a determinant factor.



Electrical energy management

OPC-DA

RS-485 or Ethernet



CVM NRG-96

CVM-MINI

LM4I/4O

EDMk

Technical features

| | |
|--|--|
| Power supply | 230 V AC -10 ... +15 % |
| Burden | ITF / Shunt 4 V·A ITF-RS485 4,2 V·A |
| Frequency | 50 ... 60 Hz |
| Measuring circuit | |
| Rated voltage: Phase-Neutral | 300 V AC |
| Frequency | 45 ... 65 Hz |
| Rated current | $I_n / 5 \text{ A}$ |
| Permanent overload | $1,1 I_n$ |
| Voltage circuit burden | 0,75 V·A |
| Current circuit burden | ITF 0,9 V·A - Shunt 1,2 V·A |
| Transistor output (NPN) | 24 V DC / 50 mA |
| Accuracy | |
| Voltage / Current: 0,5 % ± 2 dig. | |
| Powers: 1 % ± 2 dig. | |
| Neutral: 1 % ± 2 dig. | |
| Category III - 300 V / 520 V c.a. / AC, EN-61010 | |
| IEC 664, VDE 0110, UL 94, IEC 348, IEC 571-1, EN 50081-1, EN 50082-1, EN 61010-1 | |

| L1 | | | | | |
|-----------------------|----------------------|---|---|---|---|
| L2 | | | | | |
| L3 | | | | | |
| Three-phase | | | | | |
| Voltage (P-N and P-P) | | • | • | • | |
| Current | | • | • | • | |
| Active power | Consumed & generated | • | • | • | • |
| Inductive power | | • | • | • | • |
| Capacitive power | | • | • | • | • |
| Apparent power | | • | | | |
| Power factor (cos φ) | | • | • | • | • |
| Maximum demand | | • | | | |
| Frequency | | | | • | |
| Active energy | Consumed & generated | • | | | |
| Inductive energy | | • | | | |
| Capacitive energy | | • | | | |
| Apparent energy | | • | | | |
| Measuring THD (V, A) | | | • | • | • |
| Neutral current I_n | | | | | |

Measured parameters

| M51800 - CVM NRG96 | | | | | |
|--------------------------------|--|---|---|---|--|
| M51900 - CVM NRG96-ITF | | | | | |
| M51911 - CVM NRG96-ITF-RS485-C | | | | | |
| True RMS value (TRMS) | | • | • | • | |
| 4 quadrants | | • | • | • | |
| Programmable ratio (V, A) | | • | • | • | |
| Isolated current input | | • | • | | |
| RS-485 Modbus communications | | • | | | |
| NPN transistor output | | • | | | |

Types / Features



www.circuitor.com

CIRCUTOR, SA - Vial Sant Jordi, s/n - 08232 Viladecavalls (Barcelona) SPAIN

Tel. (+34) 93 745 29 00 - Fax: (+34) 93 745 29 14

e-mail: central@circuitor.es